



# Troubleshoot attribute data at the core of Active Directory®

ADxray helps troubleshoot directory problems by providing access to attribute information at the core of Active Directory. Attribute data is disclosed in both its raw and interpreted format providing information that's needed by both administrators and programmers alike. Administrators who are troubleshooting network problems will find this product invaluable because they'll quickly be able to search for, find and edit attributes. And, as programmers write scripts and/or products for Active Directory, they will have speedy access to the attribute names and values they need to execute their programs.

### ADxray™ features:

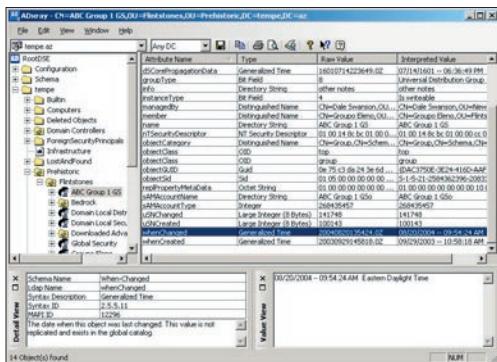
- Displays entire directory tree: all objects and attributes
- Provides extensive search capability for attributes and their values
- Low-level editing capability allows for adding, removing and modifying attribute values
- Supplies direct access to object property pages for MMC-like editing capability
- Displays detailed attribute information including descriptions
- Shows mandatory, optional, constructed and unset attribute views
- Presents an interpretation feature that translates attribute values into comprehensible formats
- Provides options to copy to clipboard, print to a report, or save to CSV file

### How will ADxray™ help me?

- Helps administrators troubleshoot directory problems by providing quick access to attributes and their values
- Helps move attribute information from ADxray into scripts and spreadsheets
- Provides the attribute data needed for critical AD projects and reports
- Allows you to address attribute discrepancies immediately via editing capability

### Feature list:

- Displays object attributes:
  - Displays all object types in your schema
  - Searching
  - By name
  - By description
  - By attribute value
  - Is set/Is not set
  - By specific criteria including filters
- Editing
  - Add new attribute value
  - Remove attributes
  - Edit current attribute value
  - Open and edit object property pages
  - Refresh view for updates
- Viewing
  - Mandatory attributes
  - Optional attributes
  - Constructed attributes
  - Unset attributes
  - Deleted objects (tombstones)
- Provides Attribute Details
  - Attribute description
  - Schema name
  - LDAP name
  - Syntax description & ID
  - MAPI ID
- Interprets attribute values
  - Dates
  - GUIDs
  - SIDs
  - RIDs
  - IP addresses
  - Durations
  - Generalized Times
  - UTC Time
  - Logon Hours
  - Octet Strings
  - Security Descriptors
  - Bit fields
- Provides raw attribute data
- Provides access to tombstone objects
- Copy to Clipboard
- Save as CSV



*“Attributes are the essential building blocks of all Active Directory objects,” said Dave Martinez, Product Manager, Microsoft Corp. “We are pleased to see Javelina Software provide this kind of troubleshooting tool to Microsoft Active Directory programmers and administrators.”*

*ADxray does more by showing you interpreted values of object attributes.*

