



# **ADtoolkit™**

**For Microsoft® Active Directory®**

# **White Paper**

**Printed: January 2005**

**Copyright Notice**

© Javelina Software, LLC, 2005

All rights reserved. No part of this White Paper may be reproduced in any form or by any means without the express written permission of Javelina Software, LLC.

**Limited Liability**

THIS DOCUMENT MAY CONTAIN TECHNICAL INACCURACIES OR TYPOGRAPHICAL ERRORS. ANY DOCUMENTATION WITH RESPECT TO JAVELINA SOFTWARE, LLC SOFTWARE PRODUCTS IS PROVIDED FOR INFORMATIONAL PURPOSES ONLY AND DOES NOT EXTEND OR MODIFY THE LIMITED WARRANTY EXTENDED TO THE LICENSEE OF JAVELINA SOFTWARE, LLC SOFTWARE PRODUCTS.

**Trademark Acknowledgments**

Microsoft, Microsoft Active Directory, Windows, Windows NT and Windows 2000 are either registered trademarks or trademarks of Microsoft Corporation in the United States and/or other countries.

All other brand and product names are trademarks or registered trademarks of their respective companies.

**Printed in the United States of America.**

# Contents

- Introduction** **1**
- Welcome ..... 1
  
- ADtoolkit Features** **2**
- What is ADtoolkit? ..... 2
- User Tools ..... 3
  - Add User ..... 3
  - Modify User ..... 4
  - Delete User ..... 4
  - Reset Password ..... 5
  - Search and Replace User Attributes ..... 5
  - User Reports ..... 5
  - Move User ..... 6
- Contact Tools ..... 7
  - Add Contact ..... 7
  - Modify Contact ..... 8
  - Delete Contact ..... 8
  - Search and Replace Contact Attributes ..... 8
  - Contact Reports ..... 9
  - Move Contact ..... 9
- Group Tools ..... 10
  - Add Group ..... 10
  - Modify Group ..... 11
  - Delete Group ..... 11
  - Search and Replace Group Attributes ..... 11
  - Group Reports ..... 11
  - Move Group ..... 12
- Computer Tools ..... 13
  - Add Computers ..... 13
  - Modify Computers ..... 14
  - Delete Computers ..... 14
  - Search and Replace Computers ..... 14
  - Computer Reports ..... 14
  - Move Computer ..... 15
- Files and Shares Tools ..... 16
  - Analyze ACLs ..... 16
  - Search and Replace File and Share ACLs ..... 17
- Directory Tools ..... 18
  - Resynch AD ..... 18
  - Analyze ACLs ..... 19
  - Search and Replace AD ACLs ..... 19
- Custom Tools ..... 20
- Run Options ..... 21

<b>ADtoolkit Benefits</b>	<b>22</b>
Overview.....	22
Reduce time spent on administrative tasks.....	22
Facilitate hand off of common chores .....	22
Ensure proactive management through custom reports .....	23
<b>ADtoolkit User Interface</b>	<b>24</b>
Overview.....	24
Shortcut Bar.....	25
Tab Pages.....	26
Custom Tools and Distributions.....	27
Import.....	27
Remove .....	28
Manage.....	28
Distribute .....	29
<b>Get the ADtoolkit!</b>	<b>30</b>
Contact Javelina Software .....	30

# Introduction

---

## Welcome

Javelina Software's ADtoolkit™ eases the day-to-day management of Active Directory by providing bulk task execution and streamlined configuration of administrative tasks. Provided is a set of tools that can be used by any administrator to tackle their own AD task list, or by an administrator in charge, who can pre-configure any tool to distribute to other parts of the organization. Included is a complete toolkit, used to alleviate the overburden of such vital chores as adding multiple users, groups, contacts or computers in bulk, deleting users, groups, contacts or computers, resetting passwords, moving or modifying user, group, contacts or computer properties and attributes, reporting on user, group, contacts or computer data, search and replace on user, group, contacts or computer data, search and replace functions on Access Control Lists (ACLs) in files and shares and in AD, analyzing and cleaning of ACLs in AD and on file and shares, and resynchronizing the directory. This paper provides a detailed explanation of each tool, as well as explanations of the user interface and custom tool elements of ADtoolkit.

# ADtoolkit Features

---

## What is ADtoolkit?

ADtoolkit is a comprehensive toolkit designed for Active Directory (AD) administrators of all skill levels. ADtoolkit provides tools to administrators in two different ways. Primarily, an administrator in charge can use the standard set of ADtoolkit tools to handle the complex, time-consuming AD tasks. At the same time, ADtoolkit provides admins a powerful secure way to hand off any tasks they choose by creating Custom Tools for other designated end users. These Custom Tools provide a means for admins in charge to create, modify and distribute only the tools they choose, lock down access to only a particular portion of the tree, and give them the ability to assign default pre-filled data to any tool created. In addition, ADtoolkit also includes features that allow users to simulate tasks and schedule tasks at a convenient time for them and their network. A thorough review of key ADtoolkit features follows.

---

## User Tools

ADtoolkit includes a number of tools that help administrators complete the abundance of tasks associated with managing users in AD. Without these tools, administrators who want to perform tasks on more than one user at a time are faced with using command line tools that have many switches and settings, or they could end up scripting a solution. ADtoolkit User Tools perform bulk operations to multiple areas at once and include Add User, Modify User, Delete User, Reports, Reset Password, Search and Replace User Attributes, and Move User.

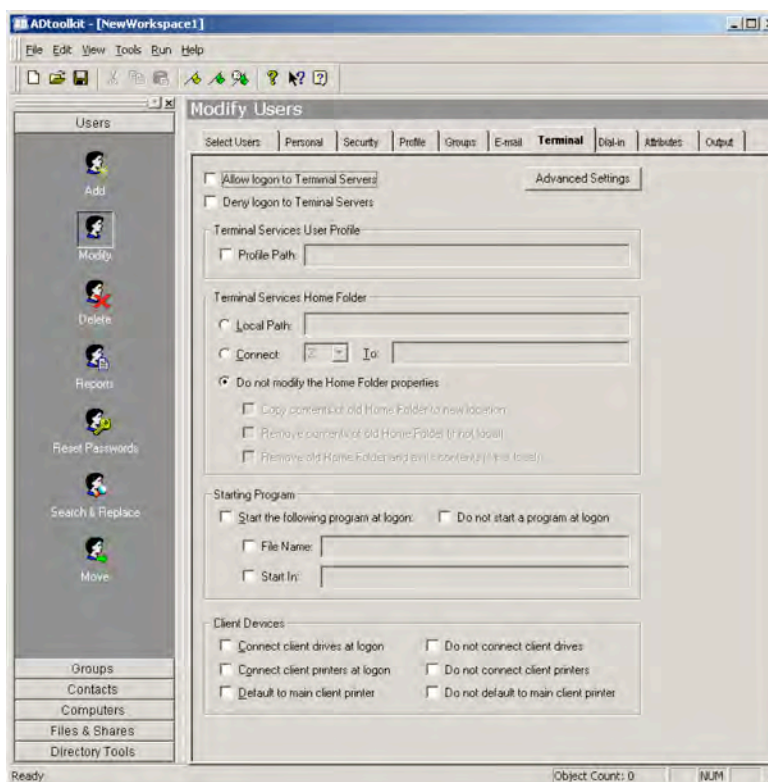


Figure 1 – ADtoolkit User Tools

### Add User

When new employees are hired, adding users to the directory is only one of the many tasks that needs to be accomplished in record time. So you could spend many hours of your time if you have more than one user to add to the directory. Adding users to the directory one by one is not an efficient use of time. The Add User tool in ADtoolkit will allow you to add users in bulk and configure the numerous additional settings needed to complete this common task, such as:

- Set user location, or OU
- Set naming conventions (Logon Name, Display name, NetBios Name, Full Name)

- Set advanced password creation criteria and options
- Set personal information such as address and organizational attributes
- Set user security options
- Set logon hours
- Set profile path
- Set home folder
- Set mailbox settings
- Set group memberships
- Set additional AD attributes
- Import user names and attributes from a CSV file

## **Modify User**

If user properties, such as group memberships or telephone area codes have changed for a group of users, then Active Directory must be updated with new information. ADtoolkit provides a number of options for changing user attributes and common properties (a set of attributes and settings that users configure often), including:

- Select users and attributes in AD or import from a .CSV file
- Modify Names and naming conventions
- Modify addresses
- Modify organizational attributes
- Modify security settings
- Modify user profiles
- Modify home folders and copy contents to new location
- Modify Mailbox settings and mail alias criteria
- Modify Terminal Services settings
- Modify Remote Dial In settings
- Modify group memberships
- Modify AD attributes

## **Delete User**

If employees leave a company, or students graduate or finish classes, their user accounts may need to be deleted or disabled and all their network resources removed. ADtoolkit provides many options to admins who need to delete or disable user accounts and properties, including:

- Deleting accounts
- Disabling accounts

- Removing Home Directories and files
- Removing home directory ACLs
- Removing mailboxes
- Removing Profile Directories
- Removing users from Groups

## Reset Password

Resetting passwords is sometimes the most repetitive task for AD administrators. Thus, it is critical to provide a tool that easily enables administrators to change passwords and account settings. ADtoolkit provides an easy to use tool that can be launched directly from a desktop shortcut with saved configurations settings, including:

- Setting a blank password
- Setting a specific password
- Unlock user accounts
- Setting password via specific criteria
- Setting password to random
- User can change password
- Password required
- Password expires

## Search and Replace User Attributes

If an attribute, such as address or area code changes for one group of users, but not another, admins may be faced with mining through AD to find which users need the new attribute. ADtoolkit allows admins to search and replace throughout AD, changing either common properties or user attributes to any users that meet the search criteria:

- Search by attribute or common property
- Specify search location by either entire subtree or only by immediate children
- Set filters either by common property or by AD attribute
- Replace options include replace always, replace if attribute is empty, replace if attribute is not empty and remove the attribute

## User Reports

ADtoolkit enables administrators to retrieve information about users easily, without third party databases. The import feature allows you to import a specific list of objects to report on, or you can simply select the browse button to select an entire Domain or OU. And because the report output can

be imported back into other ADtoolkit tools, immediate action can be taken on any report created:

- Standard reports are included such as:
  - Mailbox information
  - Group Membership
  - Users last logon
  - Locked out users
  - Expired users
  - Soon to expire users
  - Managers and direct reports
  - Home Folders
  - Locked out users
  - Inactive users
  - Plus MORE!
- Custom Report creation by common property or AD user attribute
- Filters available to narrow down selected criteria further
- Report output can be saved for import into other tools
- Report output can be emailed
- Report output can be copied via Rt Click menu for pasting into other ADtoolkit tools

## **Move User**

Changes, promotions, or reorganizing occurs often in most organizations. That's why ADtoolkit provides the move user tool to admins who need to move multiple user accounts in bulk by simply:

- Specifying new Organizational Unit
- Browse for or import a list of users to move

---

## Contact Tools

Many companies have special relationships with other vendors or organizations that require contact information to be accessible to employees. ADtoolkit includes easy to use tools that help administrators complete tasks associated with managing contacts in AD. ADtoolkit Contact Tools perform bulk operations to multiple areas at once and include Add Contacts, Modify Contact, Delete Contact, Contact Reports, and Search and Replace Contact Attributes and Move Contacts.

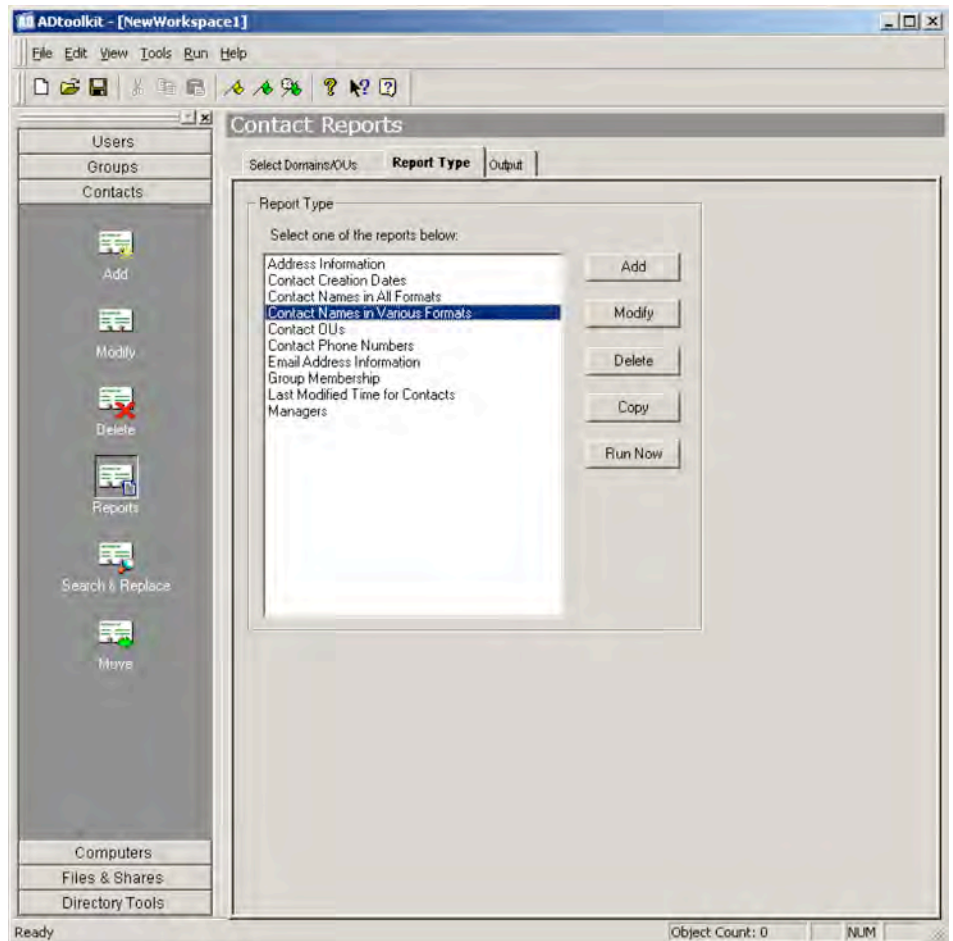


Figure 2 – ADtoolkit Contact Tools

### Add Contact

Once special relationships develop between companies, they begin to need access to each other's contact information for correspondence. People depend on the directory to be up to date for them to perform their jobs correctly. The Add Contact tool in ADtoolkit will allow you to add contacts in bulk and configure additional settings, such as:

- Set contact location, or OU

- Set Display Name (displayed in Address Book)
- Set Full Name (displayed in MMC)
- Set personal information such as address and organizational attributes
- Set mailbox settings
- Set group memberships
- Set additional AD attributes
- Import contact names and attributes from a CSV file

## Modify Contact

People and organizations constantly change, so the need arises to change to the contact information you have stored in AD. ADtoolkit provides a number of options for changing contact attributes and common properties (a set of attributes and settings that users configure often), including:

- Search for and Select contact and attributes in AD or import from a .CSV file
- Modify addresses
- Modify organizational attributes
- Modify group memberships
- Modify AD attributes

## Delete Contact

As relationships change, there will also come a time when contacts are no longer necessary. ADtoolkit provides a quick and easy way for admins to delete contacts in bulk:

- Search for and select Contacts to delete
- Import a list of contacts to delete

## Search and Replace Contact Attributes

If an attribute, such as address or area code changes for one group of contacts, but not another, admins may be faced with mining through AD to find which contacts need the new information. ADtoolkit allows admins to search and replace throughout AD, changing either common properties or user attributes to any users that meet the search criteria:

- Search by attribute or common property
- Specify search location by either entire subtree or only by immediate children
- Set filters either by common property or by AD attribute
- Replace options include replace always, replace if attribute is empty, replace if attribute is not empty and remove the attribute

## Contact Reports

ADtoolkit enables administrators to retrieve information about contacts easily, without third party databases. The import feature allows you to import a specific list of objects to report on, or you can simply select the browse button to select a Domain or OU. And because the report output can be imported back into other ADtoolkit tools, immediate action can be taken on any report created:

- Standard reports are included such as:
  - Address Information
  - Contact Creation Dates
  - Contact names in all formats
  - Contact Phone Numbers
  - Group Membership
  - Last Modified Time for contacts
  - Managers
- Custom Report creation by common property or AD user attribute
- Filters available to narrow down selected criteria further
- Report output can be saved for import into other tools
- Report output can be emailed
- Report output can be copied via Rt Click menu for pasting into other ADtoolkit tools

## Move Contact

ADtoolkit provides the move contact tool to admins who need to move multiple contact accounts in bulk by simply:

- Specifying new Organizational Unit
- Browse for or import a list of contacts to move

---

## Group Tools

ADtoolkit includes several tools that are important to help administrators manage groups in AD. ADtoolkit Group Tools perform bulk operations and include Add Groups, Modify Groups, Delete Groups, Report Groups, and Search and Replace Groups Attributes and Move Groups.

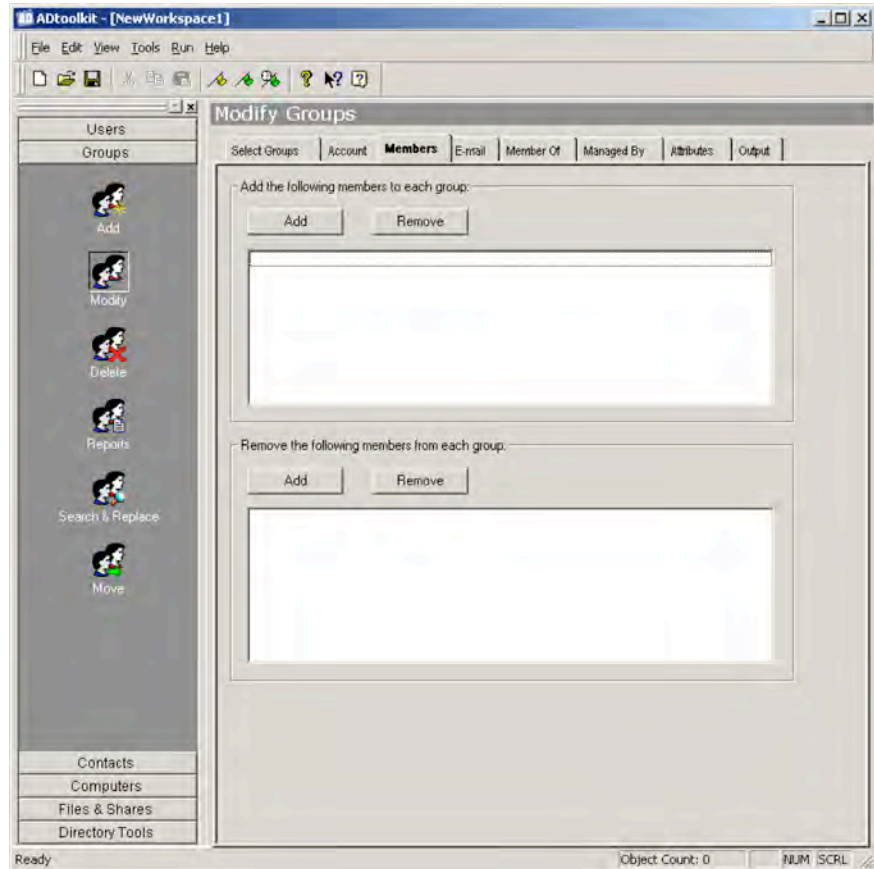


Figure 3 – ADtoolkit Group Tools

### Add Group

There are many aspects to managing groups that can be done more swiftly when you have a good tool. The Add Group tool in ADtoolkit will allow you to create groups, assign members, set group type and scope, set the group as a member of other groups and set additional group settings:

- Set group location, or OU
- Set Group Type and Scope
- Set Description and Notes
- Set mailbox settings

- Set group memberships
- Set group membership of other groups
- Set Managed By attributes and additional AD attributes
- Import group names and attributes from a CSV file

## Modify Group

Changes to group membership can become an ongoing event. ADtoolkit provides a number of options for changing group settings to alleviate the burden and make quick changes including:

- Search for and Select groups in AD or import from a .CSV file to modify
- Modify groups scope and type
- Modify group email settings
- Modify group memberships
- Modify AD attributes

## Delete Group

ADtoolkit provides a quick and easy way for admins to delete groups in bulk:

- Search for and select Groups to delete
- Import a list of groups to delete

## Search and Replace Group Attributes

ADtoolkit allows admins to search and replace throughout AD, to quickly change either common properties or attributes to groups that meet the search criteria:

- Search by attribute or common property
- Specify search location by either entire subtree or only by immediate children
- Set filters either by common property or by AD attribute
- Replace options include replace always, replace if attribute is empty, replace if attribute is not empty and remove the attribute

## Group Reports

ADtoolkit enables administrators to retrieve information about groups easily, without third party databases. The import feature allows you to import a specific list of objects to report on, or you can simply select the browse button to select a Domain or OU. And because the report output can be imported back into other ADtoolkit tools, immediate action can be taken on any report created:

- Standard reports are included such as:

- Address Information
- Group Creation Dates
- Group names in all formats
- Group Phone Numbers
- Group Membership
- Last Modified Time for groups
- Managers
- Custom Report creation by common property or AD user attribute
- Filters available to narrow down selected criteria further
- Report output can be saved for import into other tools
- Report output can be emailed
- Report output can be copied via Rt Click menu for pasting into other ADtoolkit tools

## **Move Group**

Changes and reorganizing occurs often in most organizations. ADtoolkit provides the move group tool to admins who need to move groups:

- Specify new Organizational Unit
- Browse for or import a list of groups to move

---

## Computer Tools

Unused computer accounts left in AD can pose a security risk as well as cause a cluttered and inefficient directory. To help solve this and other computer account issues, ADtoolkit provides administrators with five tools: Add Computer, Modify Computer, Delete Computer, Search and Replace Computer, Computer Reports and Move Computer.

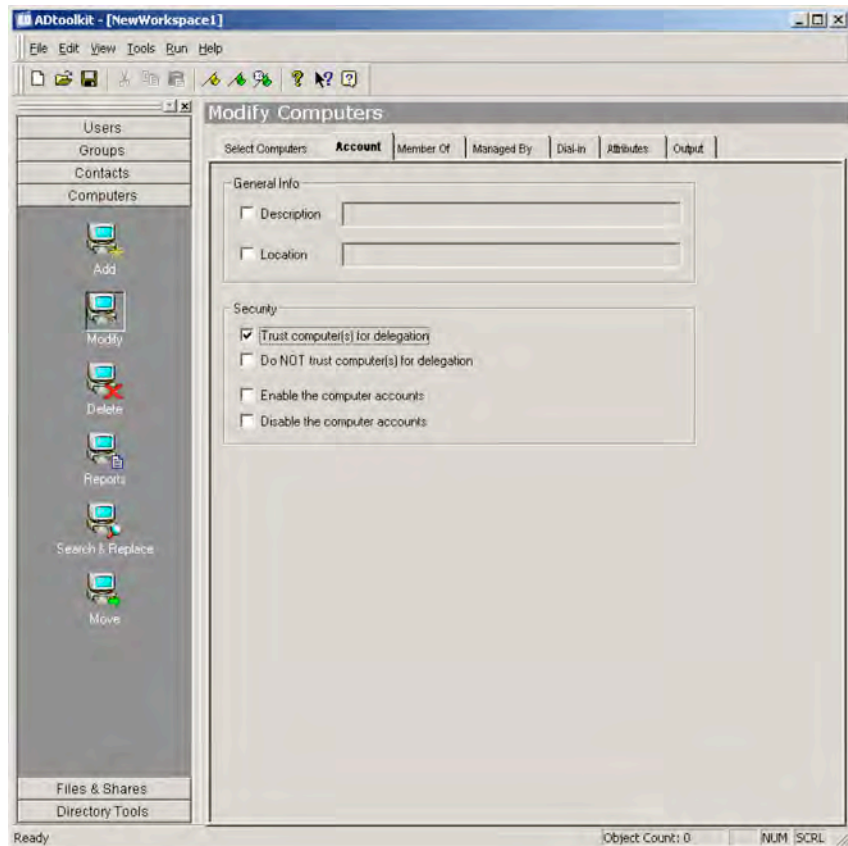


Figure 4 – ADtoolkit Computer Tools

### Add Computers

Managing computers in AD is important for maintaining an efficient database. The Add Computer tool in ADtoolkit will allow you to create Computers in AD, set location and group memberships and quickly configure additional settings such as:

- Import computer names and data
- Modify computer data
- Set computer description and location
- Set computer delegation trusts

- Set computer group membership
- Set computer management
- Set computer dial in attributes
- Add/Modify AD computer attributes

## Modify Computers

Changes to multiple computers can now be done with ADtoolkit. Select the computers you want to modify then go to the tab pages to make changes to all of the computers at once.

- Import computer names and data
- Modify computer description and location
- Modify computer delegation trusts
- Modify computer group membership
- Modify computer management
- Modify computer dial in attributes

## Delete Computers

ADtoolkit provides a quick and easy way for admins to delete computers in bulk:

- Select computer for deletion
- Select computer for disabling

## Search and Replace Computers

ADtoolkit allows admins to search and replace throughout AD, to quickly change either common properties or attributes to computers that meet the search criteria:

- Search by attribute or common property
- Specify search location by either entire subtree or only by immediate children
- Set filters either by common property or by AD attribute
- Replace options include replace always, replace if attribute is empty, replace if attribute is not empty and remove the attribute

## Computer Reports

ADtoolkit enables administrators to retrieve information about computers easily, without third party databases. The import feature allows you to import a specific list of objects to report on, or you can simply select the browse button to select a Domain or OU. And, because the report output can be imported back into other ADtoolkit tools, immediate action can be taken on any report created:

- Standard reports are included such as:
  - DC or Server / Workstation
  - Description and Location
  - Dial-In Access Information
  - Disabled Computer Accounts
  - Domain Controllers Only
  - Inactive Computer Accounts
  - Last Logon Date and Server
  - OS Name, Version and Service Pack
  - Servers and Workstations Only
  - Trusted for Delegation
  - Date Last Modified
  - Group Memberships
  - Date Created
- Custom Report creation by common property or AD user attribute
- Filters available to narrow down selected criteria further
- Report output can be saved for import into other tools
- Report output can be emailed
- Report output can be copied via Rt Click menu for pasting into other ADtoolkit tools

## **Move Computer**

ADtoolkit provides the move computer tool to AD admins who need to easily move computer accounts:

- Specify new Organizational Unit
- Browse for or import a list of computers to move

---

## Files and Shares Tools

Without tools to keep your ACLs in top shape, they can become cluttered, out-of-date, and file access times can suffer. So, to keep your network performing at its peak, ADtoolkit provides the Analyze ACL tool to scan your ACLs for potential problems and even correct some of the more serious issues. And for correcting those problems not automatically tackled by the Analyze ACL tool, ADtoolkit includes the Search and Replace ACL tool to find those incorrect ACL entries and replace them with valid ones.

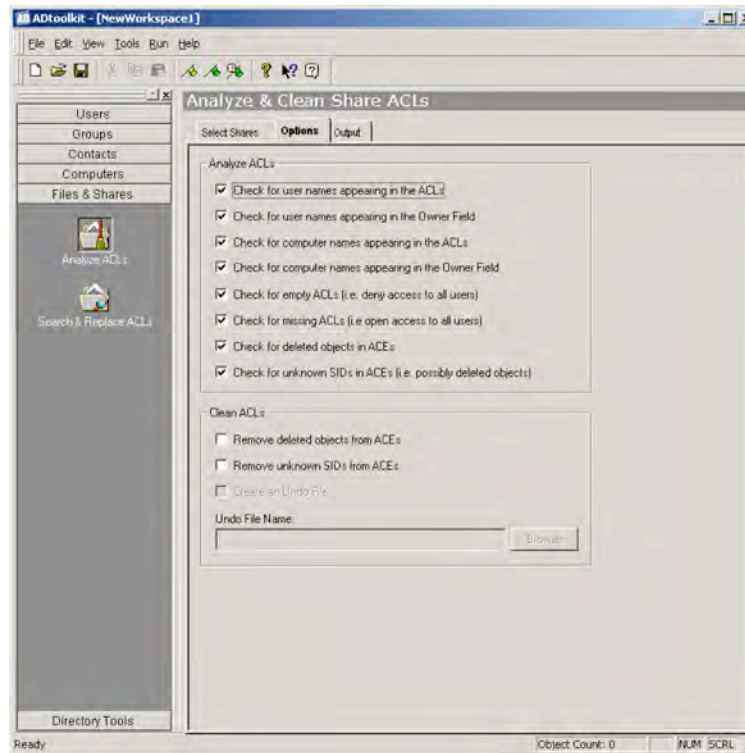


Figure 5 – ADtoolkit Files and Shares Tools

### Analyze ACLs

Some administrators may already know that some simple rules apply to ACLs that if not followed, could impact performance and complicate maintenance. For example, user names in ACLs instead of group names makes an ACL more cluttered, and performance may suffer. ADtoolkit finds these conditions and provides a way to address them easily and efficiently. These features include:

- Find user names in ACLs
- Find user names appearing in the owner field
- Find computer names appearing in the owner field

- Find empty ACLs
- Find missing ACLs or invalid SIDs in ACEs
- Clean ACLs by removing invalid or deleted SIDs from ACEs
- Undo Remove ACL

## **Search and Replace File and Share ACLs**

If a user finds problems with their ACLs, such as user names in the list instead of group names, ADtoolkit provides a way to efficiently change it. By using the Search and Replace tool, you can make changes throughout AD in one single action:

- Specify search location
- Search by object name
- Replace in owner fields
- Replace in ACLs
- Undo Replace action

---

## Directory Tools

ADtoolkit includes several tools for managing tasks in AD. Sometimes, in order to ensure your tasks can be completed efficiently and changes are pushed out immediately, users may want to force their Domain Controllers to replicate immediately. The Resynch AD tool provides a way for administrators to perform this simple activity from the ADtoolkit console, instead of having to use other tools. Also, by providing directory tools for ACLs, users will be able to clean ACLs on AD objects and search and replace ACLs for those objects that hamper performance, such as deleted objects appearing in ACEs.

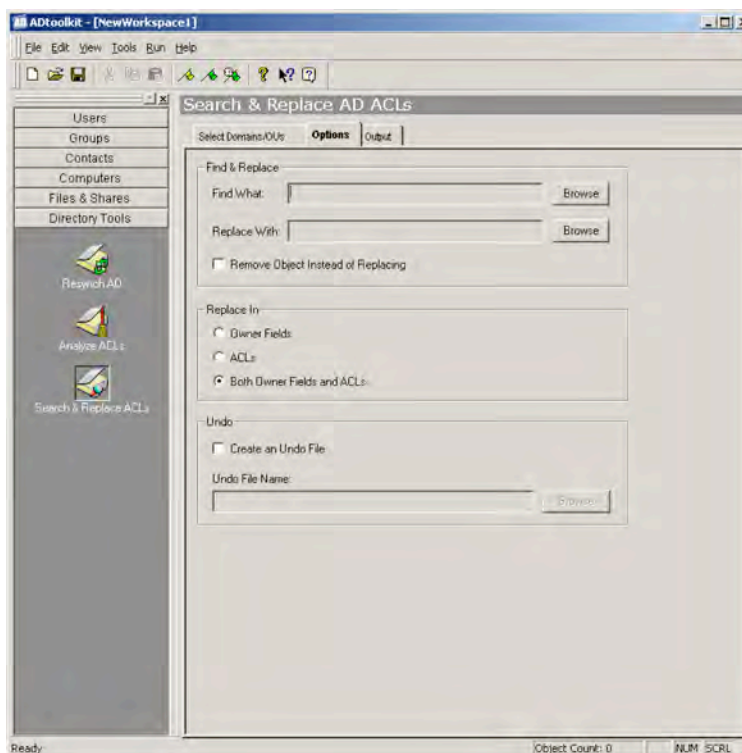


Figure 6 – ADtoolkit Directory Tools

### Resynch AD

After making changes to AD an administrator may find it necessary to immediately synchronize the directory. ADtoolkit tools make many changes to the directory, so provided is a tool to enable administrators to take action directly from the console to resynch the directory immediately:

- Select the Domain to resynch

## Analyze ACLs

Some loose rules apply to ACLs that affect performance when accessing ACLs. For example, using user names in ACLs instead of group names makes an ACL more cluttered, and performance may suffer. That's why ADtoolkit finds these conditions and provides a way to address them, easily and efficiently, with the Analyze ACL tool. Features of this tool include:

- Find user names in ACLs
- Find user names appearing in the owner field
- Find computer names appearing in the owner field and ACLs
- Find empty and missing ACLs
- Find missing ACLs
- Find deleted or invalid SIDs in ACEs
- Clean ACLs by removing invalid or deleted SIDs from ACEs
- Undo remove actions

## Search and Replace AD ACLs

Using the Analyze ACLs tool may show you when user names are used instead of group names in AD ACLs. In order to change this condition efficiently, ADtoolkit provides a tool that allows for efficient searching and replacing of objects in ACLs. Options of this tool include:

- Specify search location
- Search by object name
- Replace in owner fields
- Replace in ACLs
- Undo Replace action

---

# Custom Tools

ADtoolkit provides a way for administrators to deliver secure custom tools to other people in the organization, freeing up the more skilled administrators for advanced initiatives. ADtoolkit's custom tool capabilities enable administrators to create and manage custom tools, as well as distribute these tools via email or via a shared distribution location. These custom tools can be added to the My Custom Tools toolbar within ADtoolkit where users execute these tools in place of the standard tools. When a custom tool is created, there are a number of things that the admin in charge can do to customize the tools for the end user (see User Interface for a more detailed description of the features in Custom Tools):

- **Require Data Entry**– Allows admins in charge to require users to enter data. Without these settings filled, the custom tool will not operate at runtime.
- **Pre-set data** - Allows admins in charge to pre-fill information that shows up in the distributed version of the custom tool, this information can be changed by the end user.
- **Fill and Disable Data** – Allows admins in charge to pre-fill information that shows up in the distributed version of the custom tool, this information can not be changed by the end user.
- **Hide Tabs and Group settings** – Allows admins in charge to hide settings and tabs so that the user will not be able to see options or settings. This will benefit other parts of the organization who may only need to perform specific tasks and need not be bothered by extra information and fields not necessary to perform their tasks.

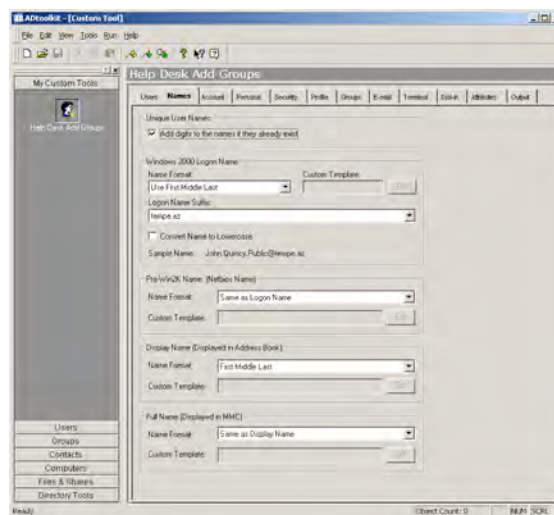


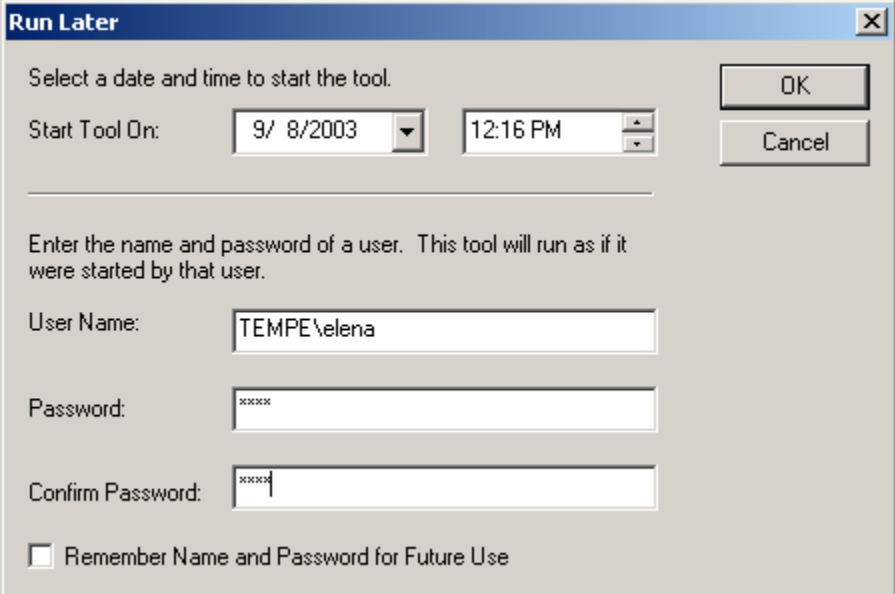
Figure 7 – Custom Tool with disabled fields and default settings

---

## Run Options

In addition to a set of tools to manage users, files and shares, and the directory, ADtoolkit provides a variety of ways to execute these tools. These options are designed to help administrators manage tasks at a time convenient for them and their network. These options include:

- **Simulate** – Provides users a complete run through of the task to expose errors that might occur at runtime.
- **Run Now** – Allows users to immediately run their completed tasks.
- **Run Later**– Allows users to schedule a time to run their tasks that is convenient for them and their network.



The screenshot shows a dialog box titled "Run Later" with a close button (X) in the top right corner. The dialog is divided into two main sections. The top section is for scheduling, with the instruction "Select a date and time to start the tool." Below this, there are two input fields: "Start Tool On:" followed by a date dropdown menu showing "9/ 8/2003" and a time dropdown menu showing "12:16 PM". To the right of these fields are two buttons: "OK" and "Cancel". The bottom section is for user authentication, with the instruction "Enter the name and password of a user. This tool will run as if it were started by that user." Below this, there are three input fields: "User Name:" with the text "TEMPE\elena", "Password:" with "xxxxx", and "Confirm Password:" with "xxxxx". At the bottom of the dialog is a checkbox labeled "Remember Name and Password for Future Use" which is currently unchecked.

Figure 8 – ADtoolkit Run Later dialog

# ADtoolkit Benefits

---

## Overview

ADtoolkit provides the essential tools that enable administrators to efficiently manage multiple tasks in Active Directory. This section discusses some of the many benefits that ADtoolkit provides to Active Directory administrators.

---

## Reduce time spent on administrative tasks

From adding multiple users to active directory at once, to searching and replacing ACLs on files and shares in one action, ADtoolkit reduces the time that administrators spend on tasks. For example, a report is created to show users who have a Home Folder on an overloaded server A. Import this report into the Modify User tool, specifying the new Home Folder location on the faster server B, and select the option to copy the contents of the folder. By executing this task, the users identified in the report immediately have their Home Folder, and contents, relocated to the faster server B. Modifying data can swallow up your whole day unless you can change information easily for many users, groups or contacts at once. And, if the directory doesn't have up to date information, then it becomes obsolete. ADtoolkit's ability to make bulk changes or additions at once ensures that Active Directory administrators have the time they need for other, more important Directory initiatives.

---

## Facilitate hand off of common chores

ADtoolkit includes a custom tool interface that allows administrators to create, configure, delete and distribute custom tools. By creating custom tools, the administrator in charge can distribute only the tools they want, with access to only the fields that they want, with pre-filled data, and configuration settings. By doing so, administrators can ensure that policies and procedures are followed for each task. And, with output files generated for each tool, the administrator can track all change made to the directory, and by whom. Using the Custom Tool wizard, administrators can even send off an email message with the custom tools attached or with a link directly to the custom tool share location for quick and easy access.

---

## Ensure proactive management through custom reports

ADtoolkit allows administrators to be proactive, giving them the ability to create custom reports on Active Directory User, Group, Contact, or Computer Attributes without scripting. And, by scheduling these reports to run at their convenience, administrators can have AD data at their fingertips. Specific objects can be imported so that you can get reports on only those objects you're interested in, or you can use the Browse feature to select an entire domain or OU. The report output can be imported back into other ADtoolkit tools, so that administrators can take immediate action on the problems uncovered by the report. The product provides an extensive reporting capability that can be used by both Active Directory experts and novices.

# ADtoolkit User Interface

---

## Overview

The ADtoolkit User Interface runs on Windows 2000 Professional, Server, or Advanced Server and provides the primary interface to all aspects of ADtoolkit. The ADtoolkit user interface enables the administrator to:

- Select Tools from the shortcut toolbar
- Tab pages
- Custom Tools

---

## Shortcut Bar

The shortcut bar provides an easy to use, familiar Outlook style interface for selecting a tool. Users select tools from the shortcut bar on the left side, displayed when the ADToolkit client is launched. The shortcut bar provides the opportunity to select a group of tools, or select any of the tools offered by ADToolkit.



Figure 9 – ADToolkit Shortcut toolbar screen

---

## Tab Pages

Once a Tool is selected, the tab pages appear on the right and provide a means for the administrator to configure the task settings for each tool. The administrator can select each tab to set common settings. Then, by saving the workspace or adding a shortcut icon to their desktop, users can quickly access these preconfigured settings. Different workspace files can be created, so that custom configurations can remain easily accessible to local administrators in charge of more than one common area. Each tab contains information that the user can fill in to complete their task.

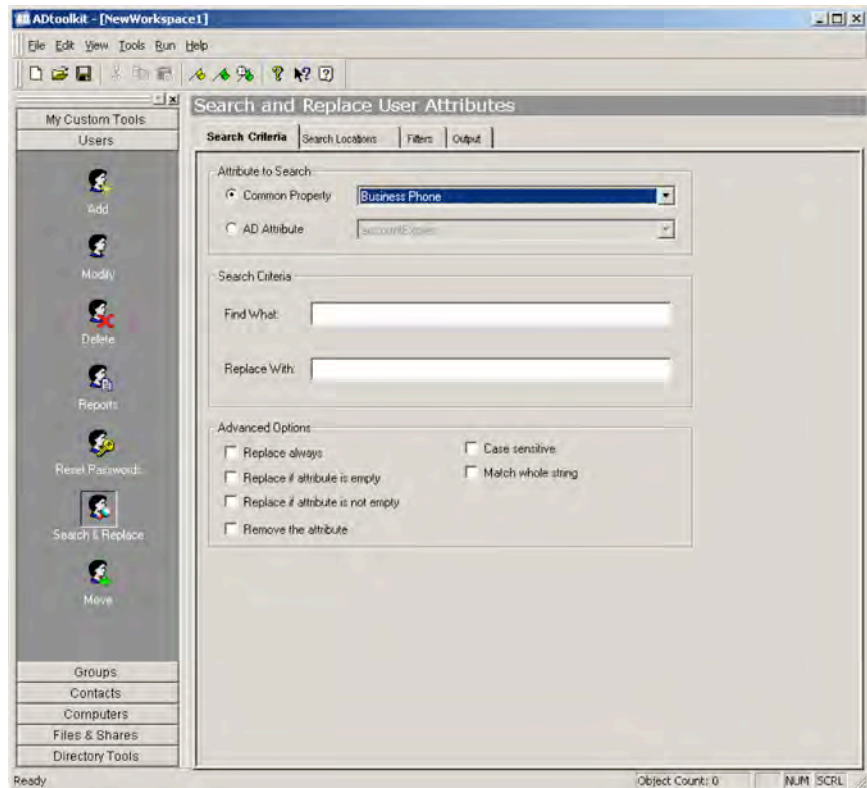


Figure 10 - ADtoolkit provides tab pages that allow users to configure task criteria.

---

## Custom Tools and Distributions

Due to the critical nature of Active Directory data, you may be hesitant to hand out the powerful set of tools in the ADtoolkit toolbox to your novice administrators. However, ADtoolkit's Custom Tools provide you with the means to customize those standard tools and limit their functionality and scope. The custom tools wizard allows you to create a customized tool from one of the standard tools by filling in default values for controls, by hiding tab pages, controls, or groups of controls, and by making fields required. And, once you've created a few Custom Tools for your lower level admins, you can bundle them together into a Distribution and post them to a share using the Distribution Wizard. The custom tools options are:

### Import

When an admin installs ADtoolkit from a distribution, all the custom tools included with that distribution are automatically installed as well. However, in order to update those tools or to add new custom tools, the admin must use the Import feature. ADtoolkit allows a user to insert the path name that leads to the appropriate distribution directory and then select which custom tools to import into the client. By default, the path name will point to the distribution that was originally used to install the ADtoolkit software.

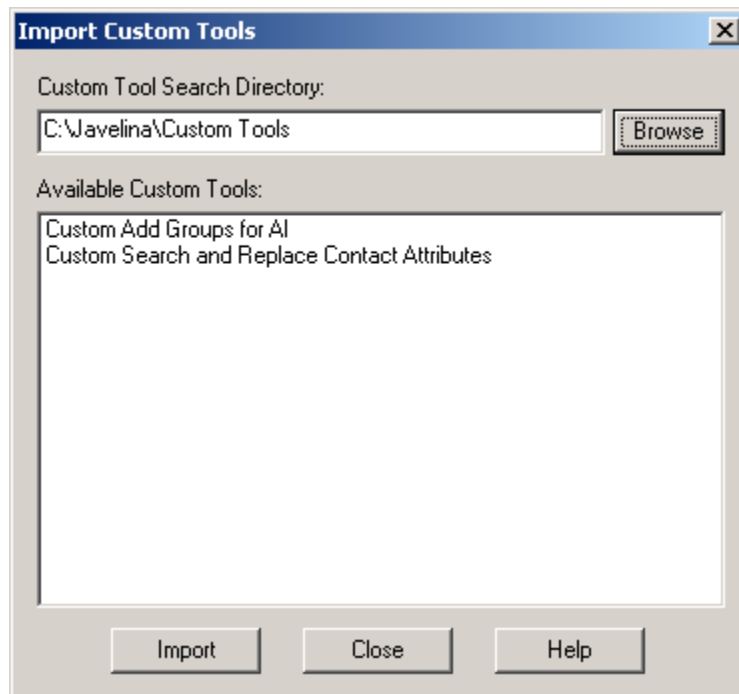


Figure 11 – Import Custom tools allow users to add custom tools to their ADtoolkit Client

## Remove

Users can delete custom tools from the My Custom Tools shortcut toolbar by selecting the Remove option from the Custom Tools menu. Doing so will only remove it from your shortcut bar, and will leave any distributions in tact that hold the original copy of the tool.

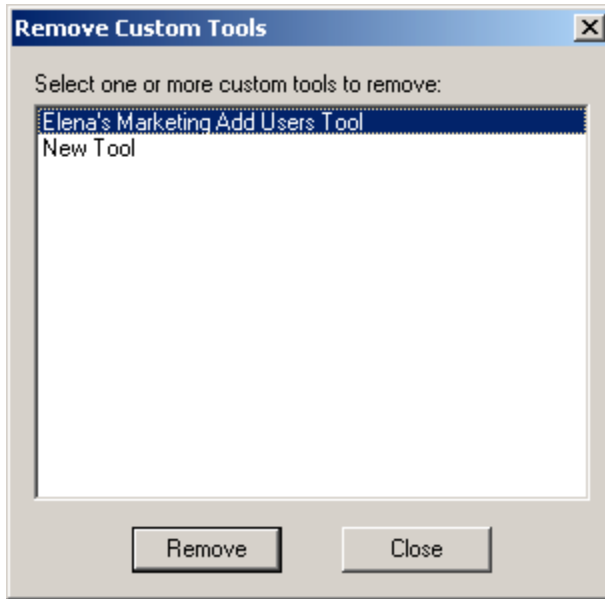


Figure 12 – Remove Custom tools from the ADtoolkit Client

## Manage

A complete set of options is available for managing custom tools in the ADtoolkit client. Users can create new tools, modify existing tools, delete custom tools, and copy a custom tool. Also from the Manage dialog, users can decide which of the custom tools they want to add to their own installation of ADtoolkit. And, users can send an email with the custom tool attached for one-step, easy access and installation.

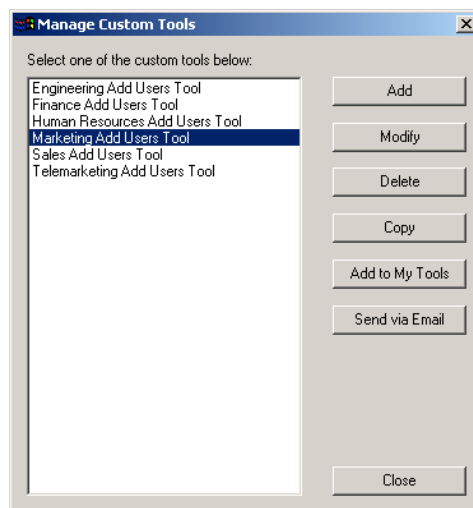


Figure 13 – Manage Custom tools from the ADtoolkit Client

## Distribute

Once an admin customizes tools for other users, ADtoolkit provides that admin with several options for distributing the tools. The custom tool distribution options include creating a local distribution, creating a master distribution and updating an existing distribution. Creating a local distribution allows an administrator to set a shared location and copy only the custom tools and setup files to that location. The Master distribution creates the custom tools in addition to the standard tools and allows the user to install all of the options. Updating an existing distribution allows the user to select which custom tools to add to or remove from a pre-existing distribution.

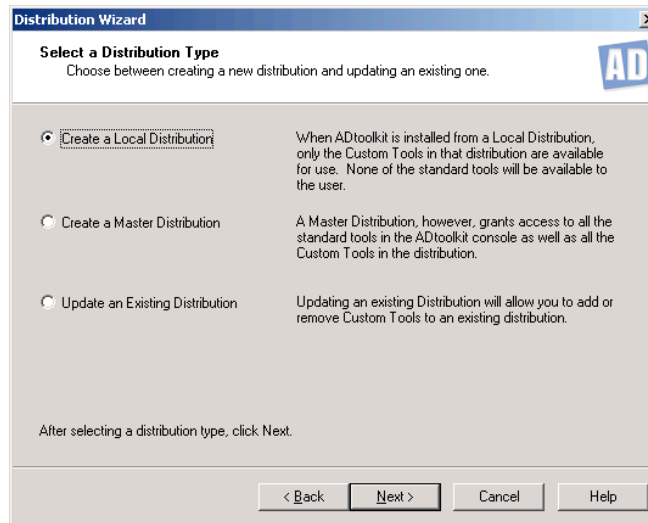


Figure 14 – Distribute Custom tools from the ADtoolkit Client

# Get ADtoolkit!

---

## Contact Javelina Software

For the latest information on ADtoolkit for Microsoft Active Directory, check out our web site at: <http://www.javelinasoftware.com/ADtoolkit.html>

### General information:

(410) 798-9907

(800) 514- 5484

(410) 798-5425 FAX

info@javelinasoftware.com

### Technical Support:

(302) 422- 0230

(800) 397-5484

support@javelinasoftware.com