

Pro-Active Job Management

Today's data centres are extremely busy and complex places. And it is more and more difficult to understand, change, support and migrate the existing mission critical environment in a faster, more productive and error-free way. VISUAL|job for TWS provides a unique and unmatched graphical environment for pro-active job management for TWS for z/OS (formally OPC).



Product Summary

Even with today's sophisticated and all-encompassing production management systems, huge amounts of time and resources are still spent needlessly on routine, repetitive tasks.

When production teams need to work with a variety of text-based applications, changing or adding to the scheduled workload and its complex background of interdependencies requires scanning through vast quantities of text. Once the relevant section is found, changes need to be made manually. Not only is vital time lost but critical errors are easily made that can seriously disrupt or even halt an entire production environment. Adding new or modified applications to an existing production environment in this way is, therefore, a lengthy and risky endeavour.

With VISUAL|job, you can bring your entire production environment into one multi-level intuitive, graphical view and gain instant control of your business-critical applications. 'Drag and drop', colour-coded icons and flowcharts allow you to quickly define and optimise your production workflow at the click of a mouse. In just a few seconds you can add or edit applications, and change single job or job group scheduling definitions and dependencies. VISUAL|job then allows you to graphically simulate their effect on the production environment to eradicate the risk of error and service failure.

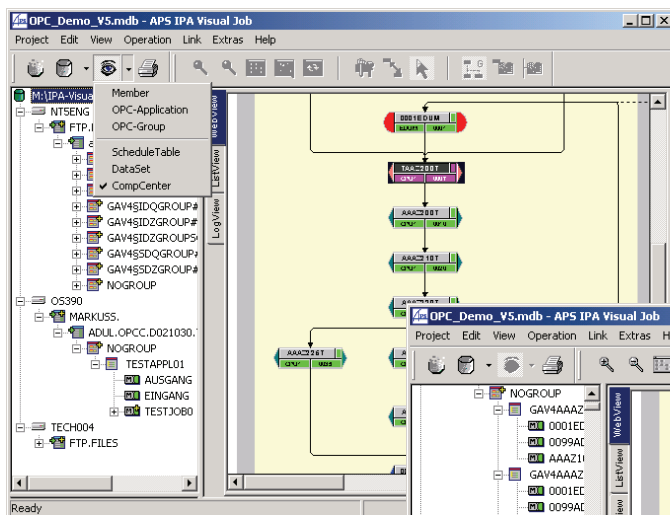
Key Benefits

- Intelligent graphical user interface eliminates time consuming and error prone manual interactions with traditional scheduling systems
- Instant overview and control of the entire job network
- Mass change capabilities — fast and secure
- "Unclean" job structures are immediately identified, production errors are eliminated pro-actively
- Up to date graphical job documentation
- No proprietary language skills required, fast implementation

Instant Overview with WEBview/TREEview

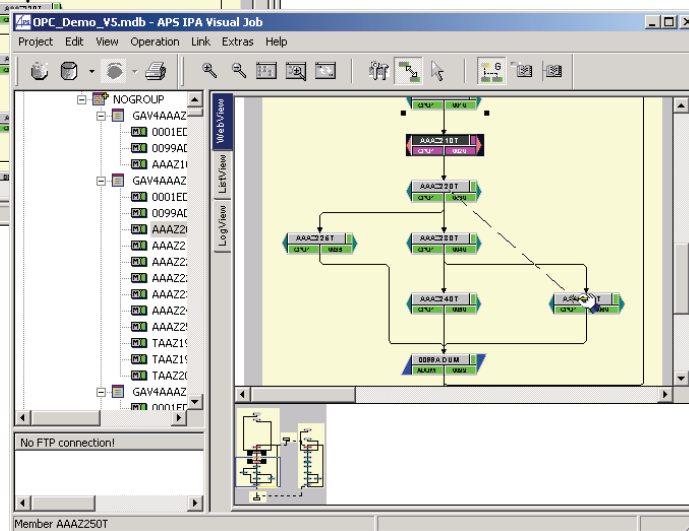
VISUAL|job enables you to see your production environment from various perspectives, or views, that each offer powerful management and control capabilities.

On the left-hand side of the display, the VISUAL|job TREEview provides a physical and logical graphical view of your production environment. From here, you can select the jobs (operations), applications, groups and datasets you wish to edit, delete, copy or move. Depending on your selection, the WEBview, GLOBALview will appear on the right-hand side of your display. In the WEBview, you can simply click on the appropriate icon to make the required changes to specific scheduling information. VISUAL|job will then automatically update all affected jobs for you to significantly reduce editing time and the risk of error.



The type and quantity of information contained in the TREEview (left-hand window) can be fully customised to your specific requirements to take you where you want to go quickly and effectively.

In the WEBview (right-hand window), you can zoom in or out to show a single cluster in detail or multiple clusters showing all the dependencies and critical information paths between job groups, applications and tables.



Features and Benefits

- Intuitive, multi-level and integrated information views to pinpoint potential problems and avoid downtime and reruns
- Complex relationships among activities are presented in an easy and understandable way
- Activities of interest can be filtered for future analysis
- Easy and fast creation and modification of applications
- Reduces time consuming tasks like understanding the existing environment
- Avoids critical errors

Workload Forecast, Simulation

The VISUAL|job calendar administration facility provides comprehensive service functions for the TWS environment. Workload planning and simulation can be done in a very simple and productive way. Possible problems will be identified and solved before they will have negative effects for the production environment. All TWS calendar related definitions like calendar, periods, run cycles and rules, including positive and negative definitions, can be maintained in a productive and easy way.

VISUAL|job is enabling organisations to optimise their batch business and to significantly save costs.

The image displays several screenshots of the VISUAL|job software interface:

- OPC Calendar:** A monthly calendar grid for 2002, showing days of the week and dates. It includes a 'Rule/Period' dropdown set to 'Selected Rules + Periods: RIANFORD' and a 'Calendar' dropdown set to 'DEFAULT'.
- Edit Application ...:** A configuration window for 'Application Information' and 'Run Cycles'. It shows details for application 'SARVANA022001' and 'A2CH POS IN DB2 LADEN'. The 'Run Cycle' table lists 'TEST' with type 'R', input arrival '04:59', and offset/rule 'EVERY DAY IN YEAR'. Below, it shows 'Defined Periods' with 'G4007MO' selected and 'Run Cycle' 'TEST'.
- OPC Period:** A window for defining a period. It shows 'Name' as 'G4007MO', 'Type' as 'A = All-days (cyclic)', 'DESCRIPTION' as 'alle Wochentage ab Montag', and 'INTV LENGTH' as '0007'. It also includes fields for 'Interval' with 'Begin Date' and 'End Date' set to '981102'.
- Please select a data ...:** A small dialog box with a date picker set to 'Wednesday, 20 November, 2002' and 'OK'/'Cancel' buttons.
- TESTAPPLAA and TESTKDA01:** Two workflow simulation diagrams. 'TESTAPPLAA' shows a sequence: EINGANG (EIN | 0951) -> TESTJOB0 (CP01 | 0959) -> AUSGANG (AUS | 0959). 'TESTKDA01' shows: EINGANG (EIN | 0951) -> TESTJOB0 (CP01 | 0959) -> AUSGANG (AUS | 0959).

Features and Benefits

- Pro-active business management
- Forecast and simulation for a given period allows effective workload planning
- Determine the effects of a change for the rest of the schedules
- Easy workflow simulation and analysis to test out interdependencies and avoid costly set-up and scheduling errors
- Reduces CPU costs

Eliminating Manual Tasks and Critical Errors with Cross Reference and Mass Change Capabilities

With the VISUAL|job cross-referencing facility, you can quickly identify and select all jobs based on specific common scheduling criteria, such as a certain scheduling condition, scheduling date or time, priority level or group. After entering the selection criteria, the jobs can be shown in either list form or highlighted as coloured icons within a logical view. Once identified, VISUAL|job then allows you to make changes to any scheduling parameter across all the jobs selected, in one single step. This cross-referencing and mass changing capability saves huge amounts of scheduling time and quickly proves itself vital in any fast-changing and dynamic business environment.

Searching for jobs with particular common criteria cannot be easier. Various cross-reference panels are available to enter the selection criteria. The results can then be viewed in list or graphical displays. Using the mass change panel, you just enter the new values required and press 'OK' to instantly change all selected jobs in one simple action.

ApplicationID	OperationName	OperationNo	Operationw/orks...
GAV4AAA2100T	0001EDUM	0001	EDUM
GAV4AAA2100T	AAAZ100T	0010	CPU1
GAV4AAA2100T	0099ADUM	0099	ADUM
GAV4AAA2200T	0001EDUM	0001	EDUM
GAV4AAA2200T	TAAZ198T	0002	GAC4
GAV4AAA2200T	TAAZ199T	0005	GAC4
GAV4AAA2200T	TAAZ200T	0007	CPU1
GAV4AAA2200T	AAAZ200T	0010	CPU1
GAV4AAA2200T	AAAZ210T	0020	CPU1
GAV4AAA2200T	AAAZ220T	0030	CPU1
GAV4AAA2200T	AAAZ225T	0038	CPU1
GAV4AAA2200T	AAAZ230T	0040	CPU1
GAV4AAA2200T	AAAZ240T	0050	CPU1
GAV4AAA2200T	AAAZ250T	0060	CPU1
GAV4AAA2200T	0099ADUM	0099	ADUM
GAV4AAA2300T	0001EDUM	0001	EDUM
GAV4AAA2300T	TAAZ298T	0002	GAC4
GAV4AAA2300T	TAAZ299T	0005	GAC4
GAV4AAA2300T	TAAZ300T	0007	CPU1
GAV4AAA2300T	AAAZ300T	0010	CPU1
GAV4AAA2300T	AAAZ310T	0020	CPU1
GAV4AAA2300T	AAAZ320T	0030	CPU1
GAV4AAA2300T	AAAZ330T	0040	CPU1
GAV4AAA2300T	AAAZ340T	0050	CPU1
GAV4AAA2300T	AAAZ350T	0060	CPU1
GAV4AAA2300T	0099ADUM	0099	ADUM
GAV4AAA2400T	0001EDUM	0001	EDUM

Mass Changes

CrossRef / MassChange - Profile

UPDATE2 [Open] [Save] [Clear]

Field	SQL	Old Value	New Value	Action
01 ApplicationID	Like	GAV4AAA*		Find
02 OperationName	Like	P*		Find
03 ApplicationLastUpdateUser		PETER	MARY	Update
04				
05				
06				
07				
08				
09				
10				

Edit Data

ApplicationLastUpdateUser [Like] PETER MARY [and] [Apply New Data] [Delete All]

Maximum Number of Characters = 008

[Cancel] [OK]

Field-selection for List View

WebView

ListView

List View - Profile

Profile1 [Open] [Save] [Clear]

Pos	Field
01	ApplicationCalendar
02	ApplicationDescription
03	ApplicationOwnerID

[Position] [Clear]

[Cancel] [OK]

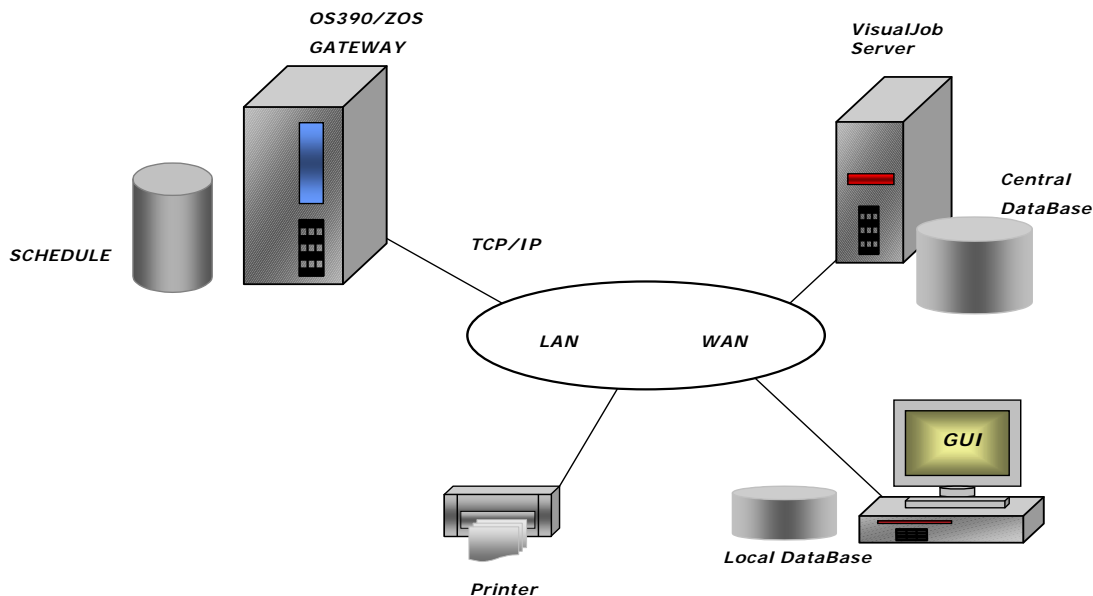
Features and Benefits

- Fast and error free changes
- Dynamic Report Generator to create individual reports for documentation
- Quick Cross Reference results
- No individual coding required, no proprietary language skills required
- Reduces time consuming tasks like checking the correctness of changes

Product Architecture

VISUAL|job can be installed in a single user or a multi user environment. The product includes intelligent and user friendly download and upload facilities for all required scheduling information for TWS via FTP. The soon available optional Host Gateway allows transparent host access and control.

As part of the VISUAL|job server in a multi user environment, user rights from groups of users down to individuals can be assigned. With this facility, users may or may not have access to certain key function areas of the product. This allows you to exploit VISUAL|job for different users, with different focus areas. Possible user profiles are for example: information gathering, job design, workload planning and proactive job management.



Key Function Areas

- TREEview
- GLOBALView
- WEBview
- LISTview
- ForeCast
- CrossRef
- PathSearch
- TREEview Filter
- DynamicReport Generator
- MassSchedule Generator
- DetailDefinition Facility
- CalendarAdmin
- PrintFacility
- Log Facility

Quick Start Implementation

VISUAL|job products are easy to use and easy to implement. The Quick Start Implementation (QSI) is available and will be tailored to customer specific requirements. The QSI program combined with experienced consulting services from APS|ENTERprise and other Certified Distribution Partners will ensure maximum exploitation of VISUAL|job within days.

Other APS Products

- VISUAL|job for Control-M
 - Specifically for the Control-M environment
- TWS|easy
 - Making life with TWS easy
 - Enhanced TWS usability and flexibility
- TWS|emon
 - Extended monitor for TWS
 - Observe and operate your TWSs from a “single point of control”
- VISUAL|output for Control-D
 - Graphical output management for Control-D

Bottom line

VISUAL|job provides an intelligent, graphical tool environment to document, maintain, enhance, support, change and update TWS job management systems in a productive, error free and easy way. It combines ease of use with effective workload planning and reduced CPU costs.

Developed by experts with long term, practical experience in the scheduling area.

A VISUAL|job investment pays back within weeks.

Certified Distribution Partners

Europe:

APS|ENTERprise

software consulting gmbh

Heinz-Nixdorf-Straße 22

D-41179 Mönchengladbach

Germany

Phone +49 (0)2161 823 777, Fax +49 (0)2161 823 7788

info@aps-enterprise.com, www.aps-enterprise.com