

**APS | Manager** for Control-M

**APS | ENTERprise**

# APS | Manager for Control-M

## Web based monitoring, operating and administration for Control-M for Distributed Systems.

Companies rely on Control-M to proficiently and accurately automate mission-critical business processes. Monitoring the execution of the automated business processes, taking appropriate actions to avoid business downtimes and administering the Control-M environment for optimal service delivery are key requisites of every successful workload automation implementation.

Within the Control-M environment, powerful user interfaces, based on fat client architectures and numerous operating systems specific line command utilities are available to perform monitoring, operating and administration tasks.

APS Manager for Control-M complements and enhances the Control-M for Distributed Systems environment with an easy to use, web based interface to monitor, operate and administer the Control-M environment from a central web portal.

### **Web Based Monitoring:**

Monitoring of one or multiple Control-M datacenters within one consolidated view.

### **Web Based Operating:**

Get detailed job status information and resolve anomalies immediately.

### **Web Based Administration:**

Allow authorised users to gain information and administer the active Control-M environment, including Control-M servers, Control-M agents, databases, user daily processes, conditions, resources, variables any many more; without using line commands or "administrator-only" fat clients.

### **Powerful User Administration:**

Specify user rights or group rights down to each individual function. Unlike the standard Control-M environment, individual administration functions can be assigned to an authorised user, without giving him / her full admin rights.

### **Audit Compliance:**

All operations performed by users are logged, creating an audit trail.

## Web based Monitoring

The web based APS Manager Console provides consolidated monitoring functions of the job executions within one or even multiple Control-M datacenters / servers.

Users are able to use APS Manager for Control-M without any specific training. An online help facility provides context sensitive assistance to the end-user.

No software needs to be installed on the client side. APS Manager for Control-M runs in standard browsers, such as Internet Explorer or Firefox.



## Setting Monitoring Filters

Within the collection of jobs a user is authorized to monitor, the user of APS Manager Console can additionally define his / her own viewing filters and the layout and structure of the central monitoring screen.

JOB ID	JOB NAME	STATUS	TASK TYPE	START
0001	WORLD_ADRS_CTRN_SBR	OK	START	2009-09-23 09:20:09
0002	WORLD_ADRS_CTRN_SBR	OK	START	2009-09-23 09:20:09
0003	WORLD_ADRS_CTRN_SBR	OK	START	2009-09-23 09:20:09
0004	WORLD_ADRS_CTRN_SBR	OK	START	2009-09-23 09:20:09
0005	WORLD_ADRS_CTRN_SBR	OK	START	2009-09-23 09:20:09
0006	WORLD_ADRS_CTRN_SBR	OK	START	2009-09-23 09:20:09
0007	WORLD_ADRS_CTRN_SBR	OK	START	2009-09-23 09:20:09
0008	WORLD_ADRS_CTRN_SBR	OK	START	2009-09-23 09:20:09
0009	WORLD_ADRS_CTRN_SBR	OK	START	2009-09-23 09:20:09
0010	WORLD_ADRS_CTRN_SBR	OK	START	2009-09-23 09:20:09



## User Administration

The APS Manager Console administrator can define the jobs a specific user is allowed to monitor. Selection criteria include Scheduling Tables, Application names, Group names, Condition names, Enterprise Manager and Control-M servers.

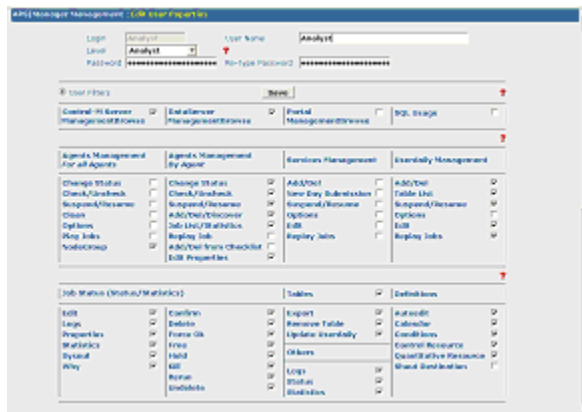
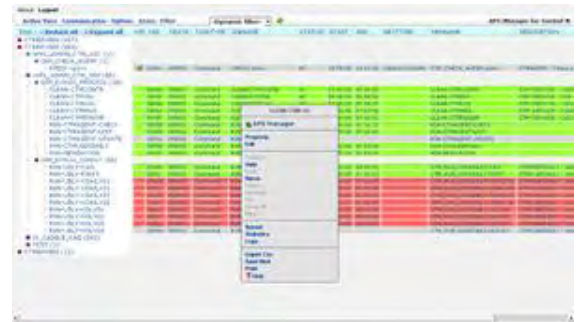


## Export of Status View

For documentation purposes, a current status view can be exported in a CSV format or in HTML format.

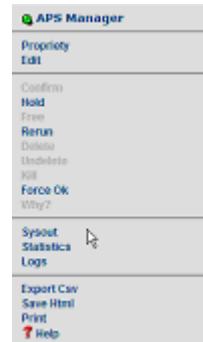
## Web Based Operating

In case the APS Manager Server component is installed and active on the dedicated Control-M server, the monitoring functions of APS Manager Console are complemented by operating functions (hold, free, rerun, etc.).



## User Administration

The APS Manager Console administrator can define the type of operating functions a user is allowed to perform.



## Viewing of current Log and Sysouts

If authorised, the user can also see current data from the job logs and sysout.



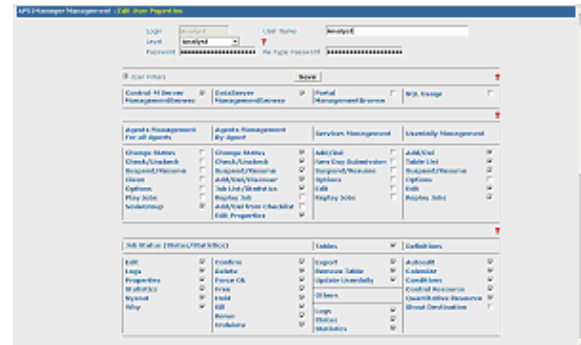
## Definitions Management

The operating functions are not limited to job status information only. Depending on the assigned authorisation, APS Manager for Control-M allows the user to gain information about and to modify

- conditions
- control resources (view only)
- quantitative resources
- global auto edit variables
- LIBMEMSYM files
- shout destination tables
- calendar utilisation (view only)

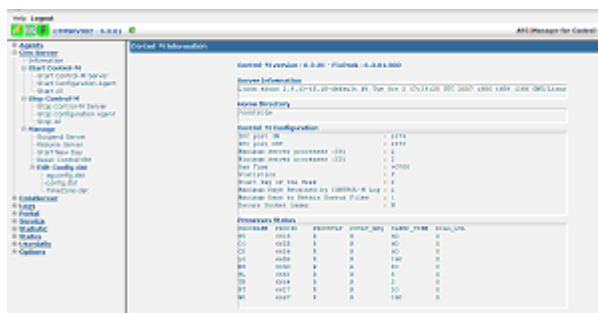
## Web Based Administration

Using Control-M line commands or the Control-M Configuration Manager requires administrative rights, limiting the ability of non-administrative users to perform important queries and tasks. This creates an organizational bottleneck in terms of functions that need to be performed by the Control-M administrator. With APS Manager for Control-M this limitation can be eliminated by authorizing a user to perform a specific admin task, without giving him / her full administration rights.



## Server Information and Administration

Authorized users can gain an immediate overview of the Control-M Server configuration and process status. Provided with the necessary authorization, administrative tasks like starting or stopping a Control-M server, suspending or resuming the Enterprise Manager gateway and the modification of configuration files (AGCONFIG.dat, CONFIG.dat, TIMEZONE.dat) can be performed.



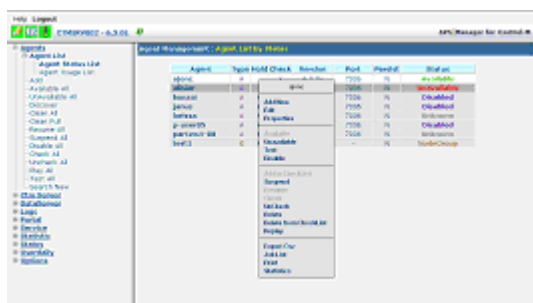
## Database Information and Administration

Through the Dataserver option of APS Manager for Control-M, it is very simple to achieve a solid overview of the underlying Control-M Server database. Even native SQL statements can be launched and the result will be presented online, with the option to print or export this information to a CSV file.



## Agent Information and Administration

Knowing the availability and configuration of a Control-M Agent is key for managing the batch processing environment. Typical tasks like changing the status of an Agent, suspend and resume the usage, changing an Agent configuration or cleaning out unused Agents are now available for authorized users via a flexible web based user interface.



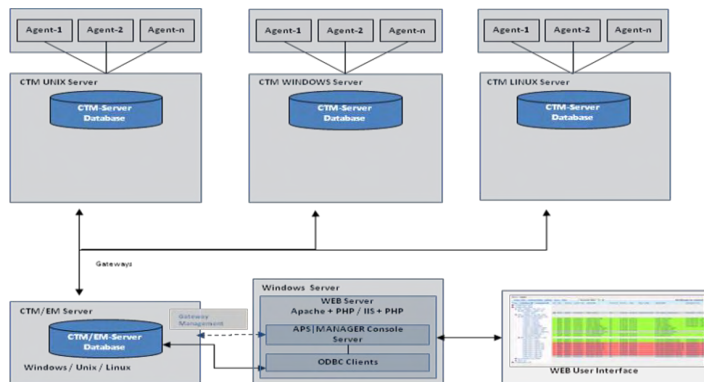
## User Daily Management

Even the viewing and the management of the user daily processes, and other housekeeping tasks, can be supported by APS Manager for Control-M.

## Architecture

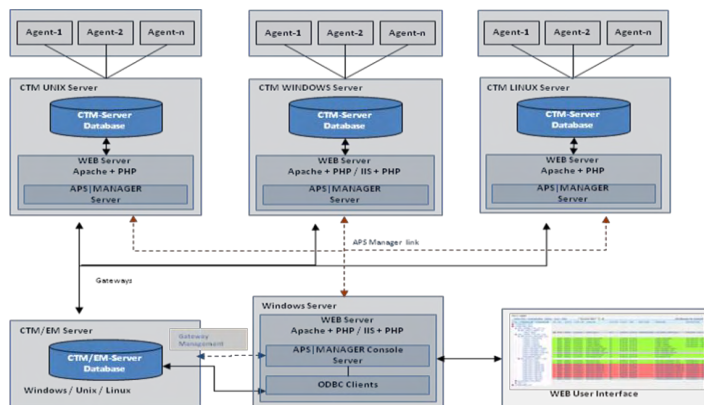
The APS Manager for Control-M architecture consists of two main components; the APS Manager Console and the APS Manager Server.

### APS Manager Console



The APS Manager Console is installed on a Windows Server, accessing the Control-M Enterprise Manager database. The APS Manager Console provides web based, consolidated monitoring of one or multiple Control-M servers. In combination with APS Manager Server, APS Manager Console also provides web based operating and administration functions.

### APS Manager Server



The APS Manager Server is installed on each supported Control-M for Distributed Systems Server. The installation is located in the same directory as the Control-M Server, using the Control-M administrator account. The APS Manager Server provides web based, Control-M server centric monitoring, operating and administration of Control-M for Distributed Systems. In a multi-Control-M server environment, the installation of APS Manager Console is recommended.

### Supported Environment

The APS Manager for Control-M components utilize APACHE web server under Linux / Unix or Windows servers or Microsoft IIS on Windows servers. On the client side, a standard web browser like Microsoft Internet Explorer or Mozilla Firefox is required.

APS Manager for Control-M supports the latest Control-M Server and Control-M Enterprise Manager environments, including version 6.1.x, 6.2.x, 6.3.x, 6.4.x, utilizing Oracle, Sybase, Microsoft SQL Server or PostgreSQL database engines.

## Return on Investment:

- ☑ Web based monitoring and operating of one or many Control-M servers in one consolidated view
- ☑ Allow authorised users to gain environment information and to perform certain administrative tasks without giving them full admin rights
- ☑ Easy to use
- ☑ Easy to deploy
- ☑ Audit compliant

Resulting in...

- ☑ Reduced learning curve for Control-M users
- ☑ Lower deployment and maintenance cost
- ☑ Productivity improvements for Control-M users
- ☑ Productivity improvements for Control-M administrators
- ☑ Faster problem detection and resolution
- ☑ Better information flow between Control-M experts and business users
- ☑ Quality gains
- ☑ Service delivery improvements
- ☑ Cost savings

# **APS | ENTERprise** **software incorporated**

APS ENTERprise software incorporated  
775 Park Avenue, Suite 255  
Huntington, NY 11743  
USA

Phone: +1 631-784-7720  
Email: [info@aps-enterprise.com](mailto:info@aps-enterprise.com)  
Web: [www.aps-enterprise.com](http://www.aps-enterprise.com)

---

# **APS | ENTERprise** **software consulting gmbh**

APS ENTERprise software consulting gmbh  
Südwall 29a  
41179 Mönchengladbach  
Germany

Phone: +49-2161-823777  
Email: [info@aps-enterprise.com](mailto:info@aps-enterprise.com)  
Web: [www.aps-enterprise.com](http://www.aps-enterprise.com)

---

## **UK RESELLER**



Zosterops Ltd  
Oak Park, Heath Lane  
Crandall, Farnham  
Surrey GU10 5PB

Phone: 0845 121 8335  
Email: [info@zosterops.co.uk](mailto:info@zosterops.co.uk)  
Web: [www.zosterops.co.uk](http://www.zosterops.co.uk)